

Description:

The Eureka Pontoon Solutions with WATER JET and function can be used in soft and hard layers for the cleaning of rivers and ponds.

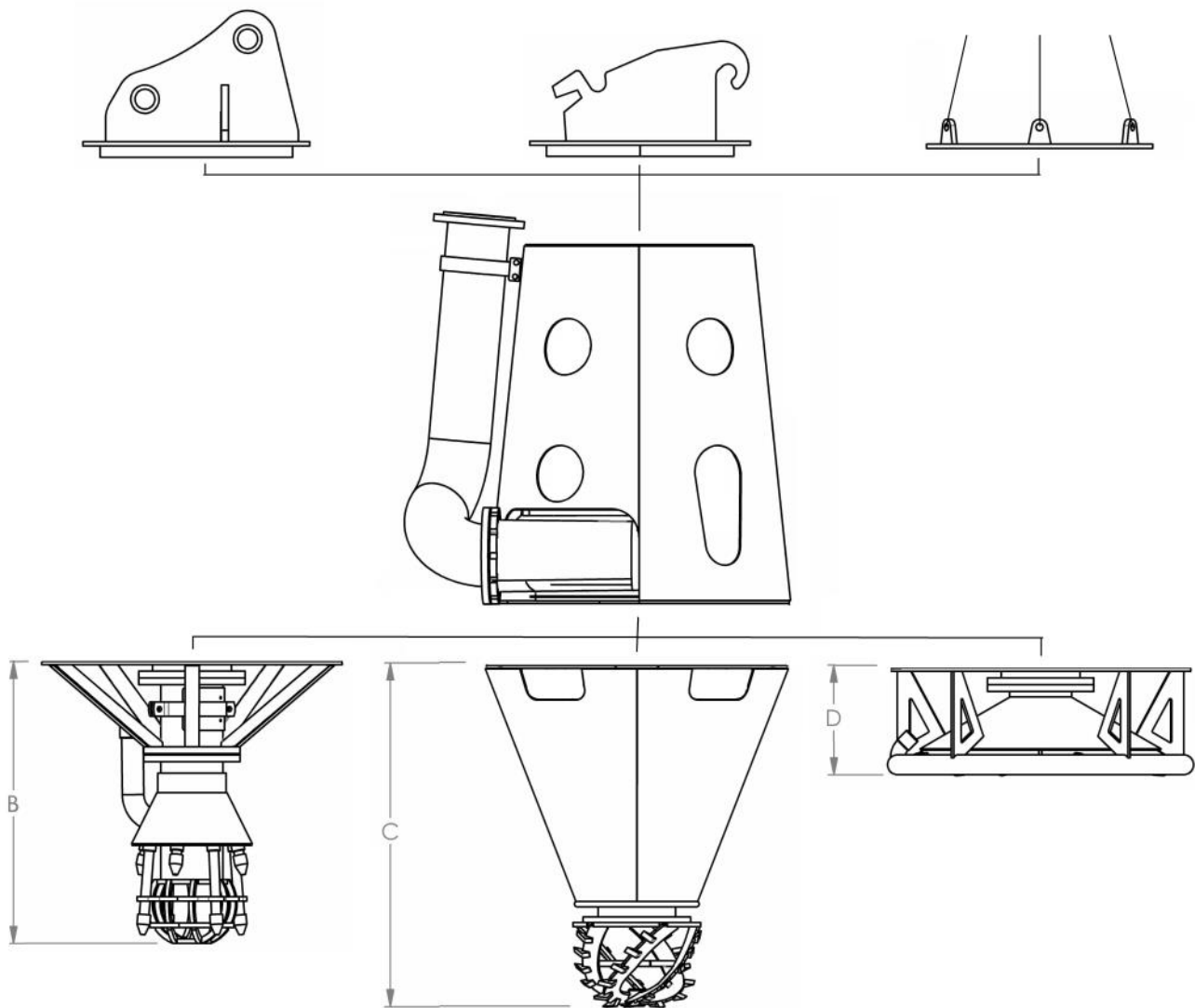
The main advantage is the submersible dredge pump which is located on the excavator to generate the highest efficiency. Another advantage of this excavator solution is the possibility for the changing of the dredge system during work.

So this Excavator Solution is the perfect machine to dredge in an environment with a changing soil.

| Dredger range: | | Pontoon 150 | Pontoon 200 | Pontoon 250 | Pontoon 300 | Pontoon 350 | Pontoon 400 |
|--|----------------------|-------------|-------------|--------------------------------|-------------|-------------|-------------|
| Suction depth up to | [m] | 50 | 50 | 50 | 50 | 50 | 50 |
| Mixture | [m ³ /hr] | 450 | 850 | 1250 | 1900 | 2300 | 3200 |
| Solid material* | [m ³ /hr] | 58 | 109 | 160 | 244 | 295 | 411 |
| Solid material* | [ton/hr] | 101 | 191 | 281 | 427 | 517 | 720 |
| Total power** | [kW] | 100 | 185 | 255 | 425 | 470 | 590 |
| Suction pipe Ø | [mm] | 200 | 200 | 250 | 300 | 350 | 400 |
| Delivery pipe Ø | [mm] | 150 | 200 | 250 | 300 | 350 | 400 |
| Spherical passage | [mm] | 100 | 110 | 130 | 150 | 190 | 220 |
| Waterjet flow | [m ³ /hr] | 100 | 150 | 200 | 250 | 250 | 300 |
| Waterjet pressure | [bar] | 7 | 7 | 7 | 7 | 8 | 8 |
| Mooring cable Ø | [mm] | 10 | 10 | 10 | 12 | 12 | 14 |
| Mooring winch power | [ton] | 1.5 | 1.5 | 1.5 | 1.5 | 2 | 2 |
| Draft depth pontoons | [m] | 0.5 | 0.6 | 0.7 | 0.8 | 0.9 | 1.0 |
| Dry weight | [ton] | 24 | 33 | 46 | 55 | 68 | 75 |
| Dimensions pontoons | [m] | Custom | Custom | Custom | Custom | Custom | Custom |
| *Solid material = 70% < 2 mm 20% 2 - 32 mm 10% > 32 mm | | | | **Power = A-rating or Electric | | | |
| Options: | | | | | | | |
| Spuds | | Option | Option | Option | Option | Option | Option |
| Spud carrier | | Option | Option | Option | Option | Option | Option |
| Automatic Dredge control | | Option | Option | Option | Option | Option | Option |
| Cabin AC | | Option | Option | Option | Option | Option | Option |
| Toilet | | Option | Option | Option | Option | Option | Option |

Pontoon Solutions

Main dimensions:



Delivery Pipe



Water Jet Pump



Hydraulic Power Pack



Marsh crawler

EUREKA

www.eureka-bv.com

Maasstraat 3
NL-7071 VR ULFT
The Netherlands

Phone : 0 (031) 315 377 608
Fax : 0 (031) 315 377 609
Email : info@eureka-bv.com

All our quotations, all orders placed with us and all contracts concluded with us, are subject to the METAALUNIE CONDITIONS. These conditions are filed with the registrar of the District Court of Rotterdam. Upon request, the conditions of delivery and payment will be sent to you for free as well.